

04th November 2022

REF: GDC/MSC/005/22-23/dk-bo

TO: All Bidders

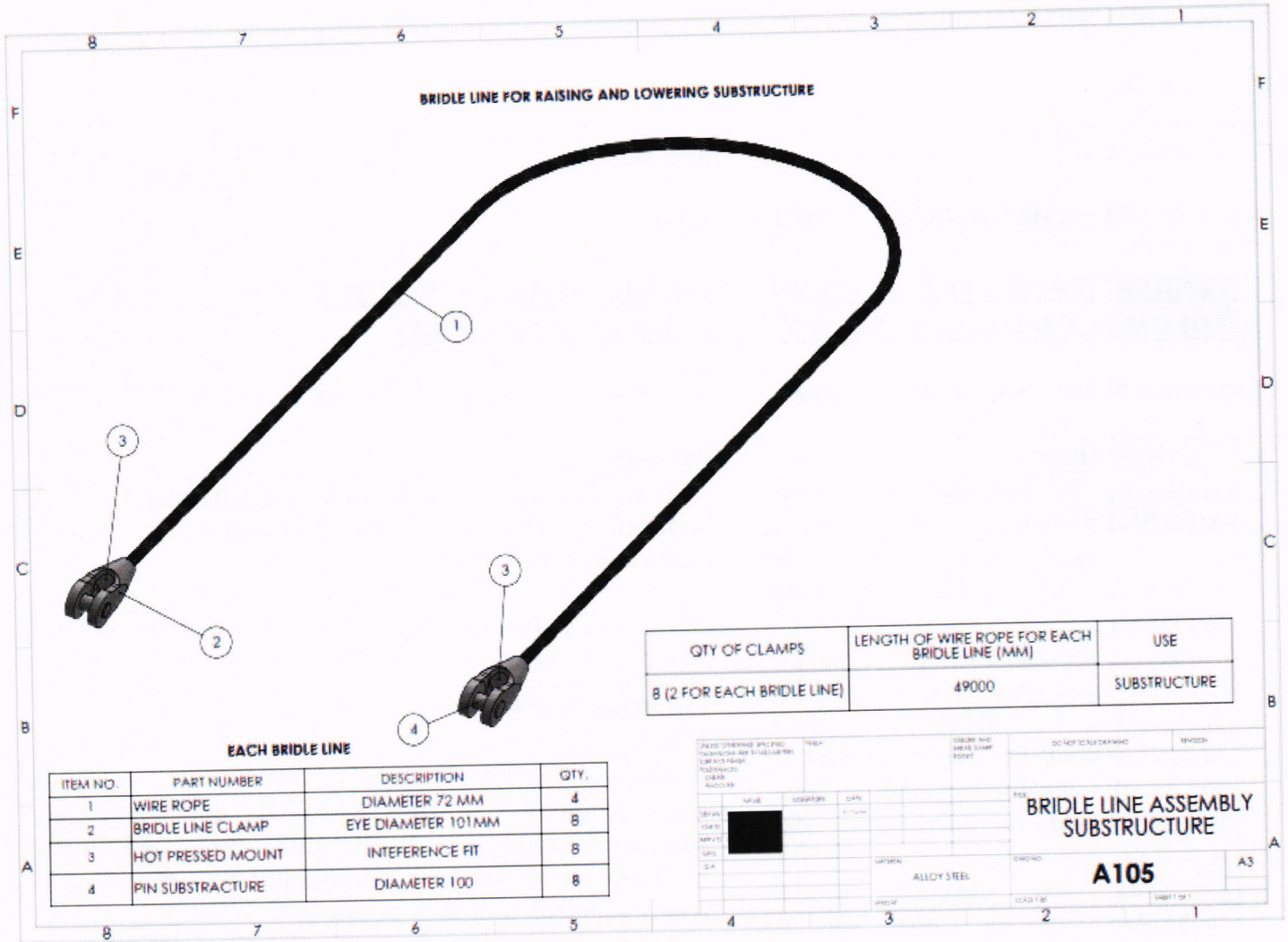
Dear Sir/Madam,

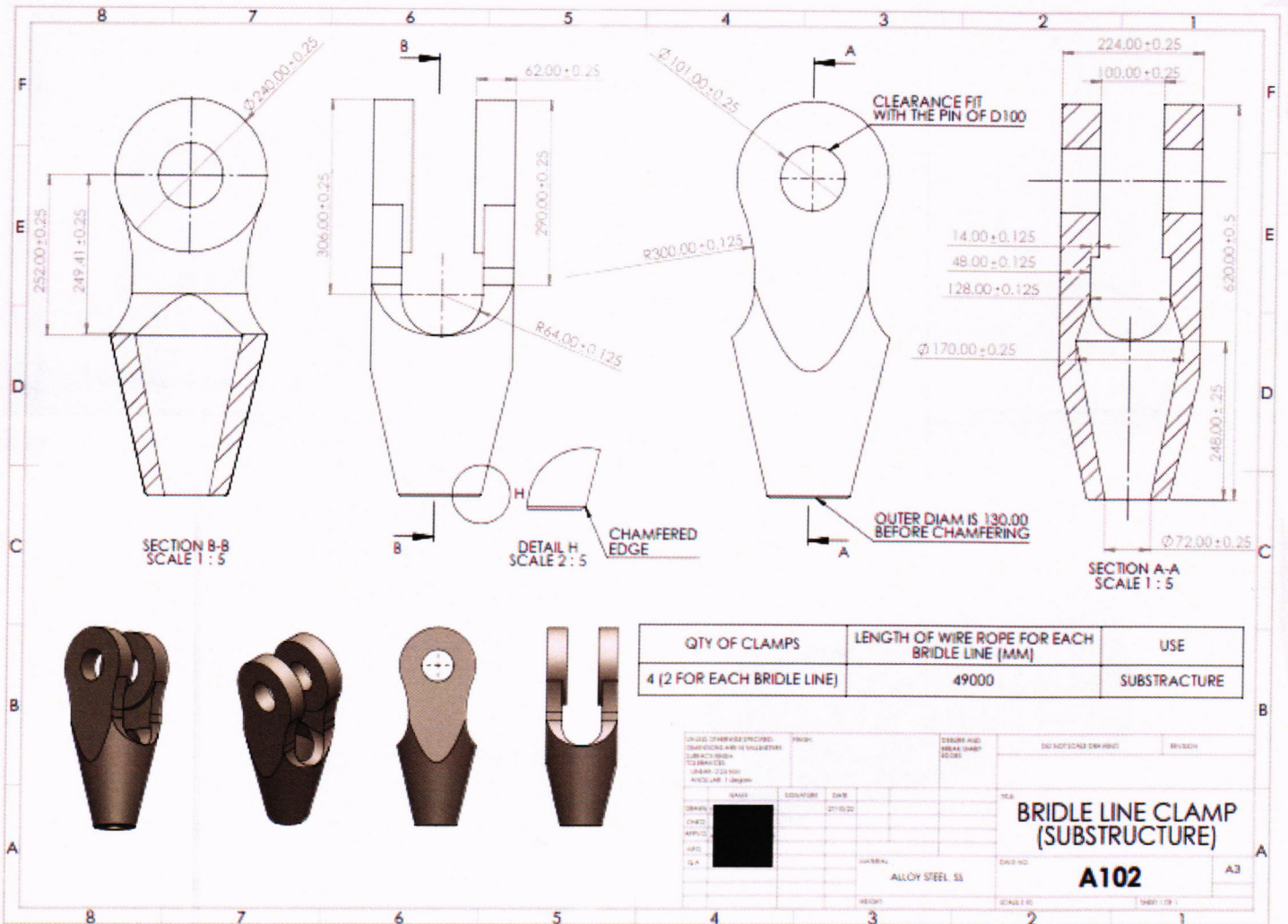
ADDENDUM 3 : AMENDMENT/CLARIFICATION

RE: TENDER FOR SUPPLY & DELIVERY OF RIG BRIDLE LINES FOR BARINGO SILALI GEOTHERMAL PROJECT. TENDER NO. GDC/DO/OT/014/2022:2023

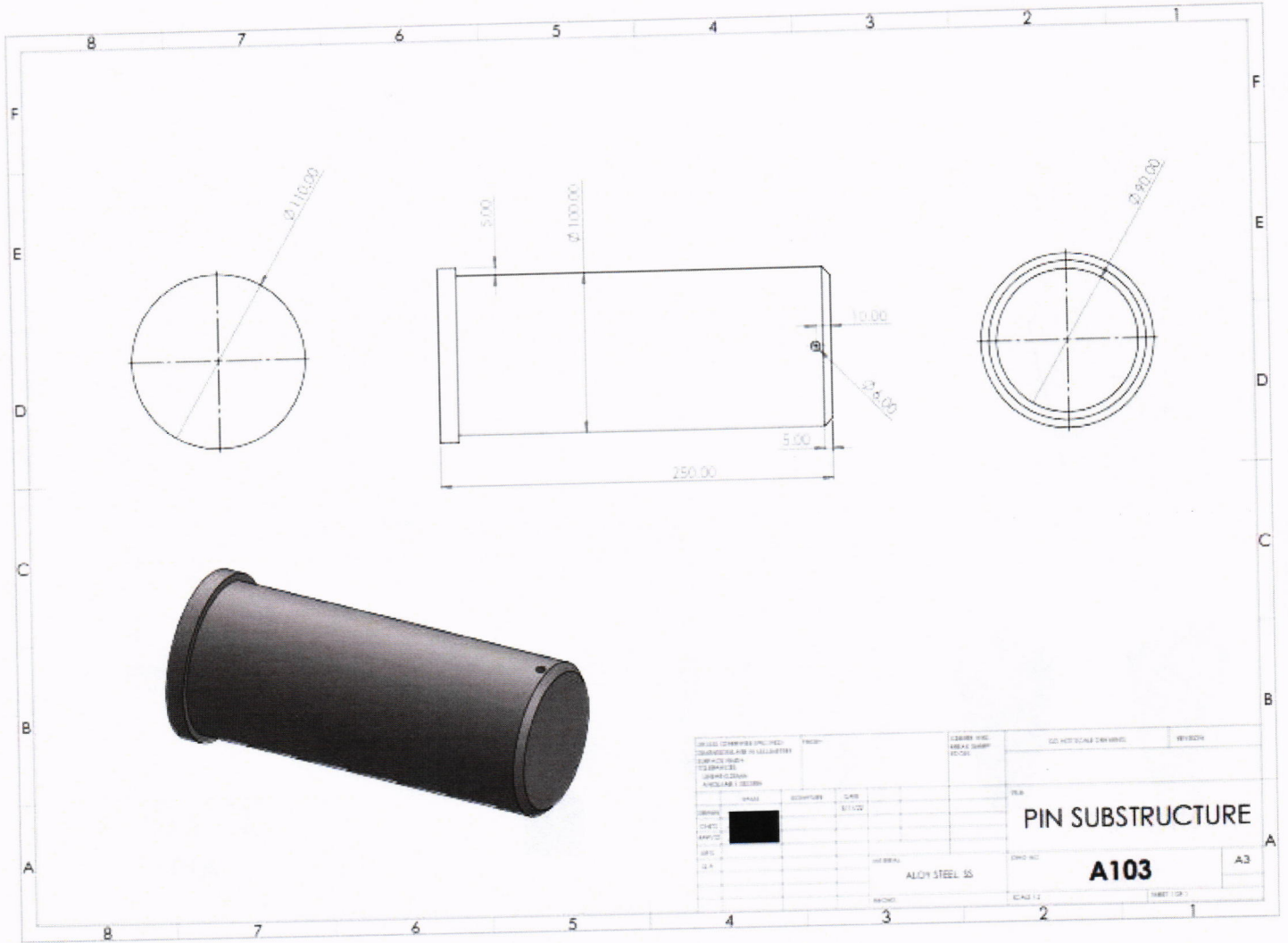
In response to bidder's request for clarification, GDC wishes to provide the following response;

No	Tenderer Query	GDC Response
1.	<p>According to technical specification, Mast Bridle line wire rope with Diameter 72mm, Length 61.8m, 6X19, IPS, Preformed, IWRC, RRL, nongalvanized is required.</p> <p>However, the manufacturer is pointing out that these wire ropes (6X19, IPS, Preformed, IWRC, RRL, nongalvanized) for Mast Bridle line and (6X37, IPS, Preformed, IWRC, RRL, nongalvanized) for Substructure bridle line is an outdated technology. They are providing the updated version/technology of the Mast and the Substructure Bridle Lines with the same dimensions. Will you accept the updated technology/version of the wire ropes? Kindly advise.</p>	<p>The bridle lines must meet the following minimum specifications provided. Bridle lines of higher specifications are acceptable.</p> <p>API licenses/certificates – A tenderer shall provide a copy of the manufacturer's valid API SPEC 9A.</p> <p>Mast bridle line wire rope Specifications.</p> <ul style="list-style-type: none"> • Diameter - 72mm, • Length - 61.8m (From clamp Eye Centre to eye Centre), • Construction - 6 × 36 Class, RR, IWRC or 8 × 36 class, compacted stand RR, IWRC, IPS, Preformed, nongalvanized with OS with CS (Speltor Socket with pin recess supplied with pins of diameter 110mm. Each pin should have safety lock feature for the pin). • Wire rope Load Capacity - 1495KN specific for raising JJ450/45-KS mast for ZJ 70D rigs. <p>Substructure bridle line wire rope Specifications;</p> <ul style="list-style-type: none"> • Diameter-72mm, • Length - 49m (From clamp Eye Centre to eye Centre), • Construction - 6 × 36 Class RR IWRC or 8 × 36 class compacted stand RR, IWRC, IPS, Preformed, nongalvanized with OS with CS (Speltor Socket with pin recess supplied with pins of diameter 110mm. Each pin should have. • Safety lock feature for the pin). <p>Wire rope Load Capacity- 1700KN specific for raising DZ450/10.5-S15 Substructure for the ZJ70D rigs.</p> <p>See the drawings below</p>



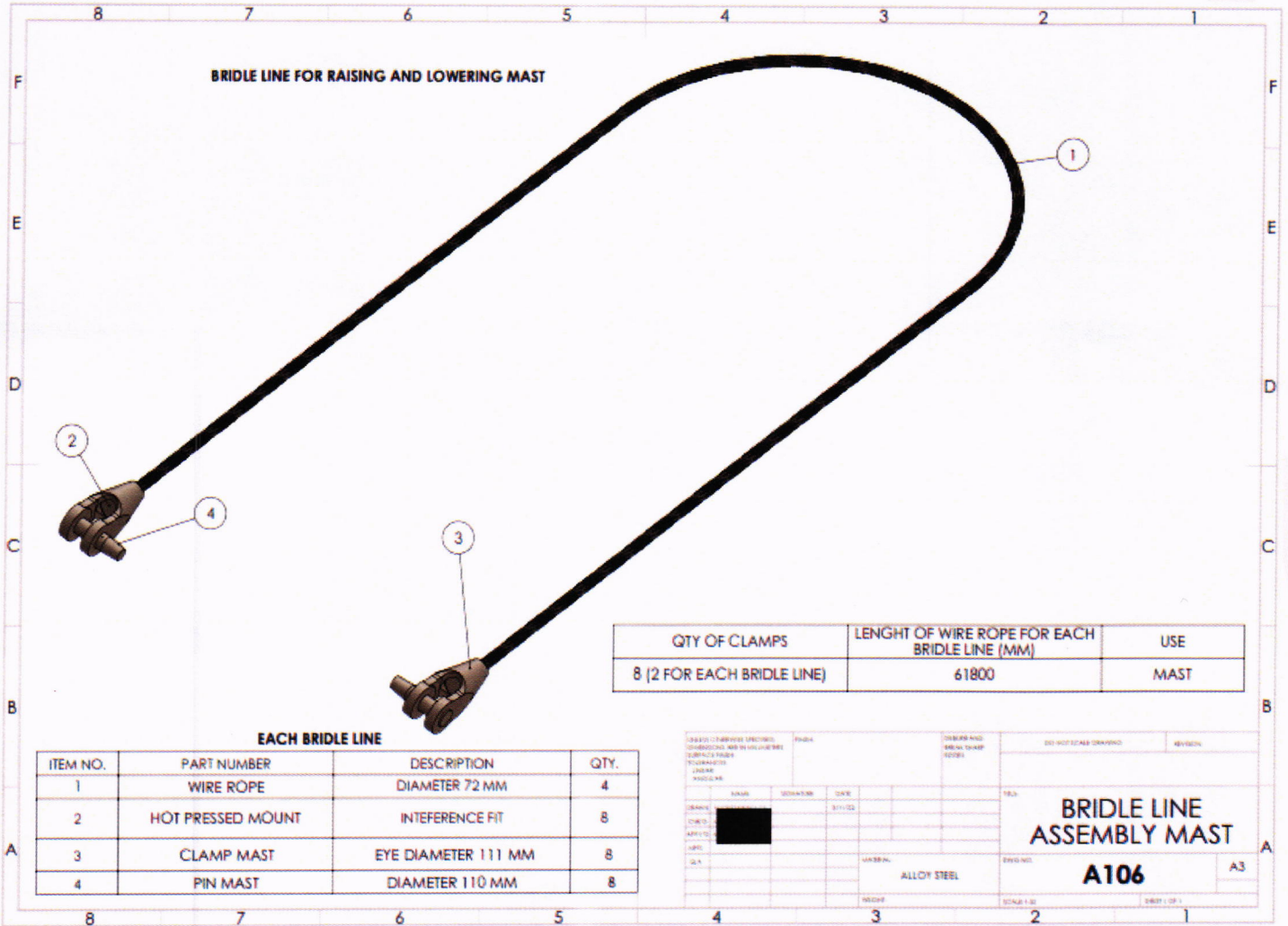



Dm

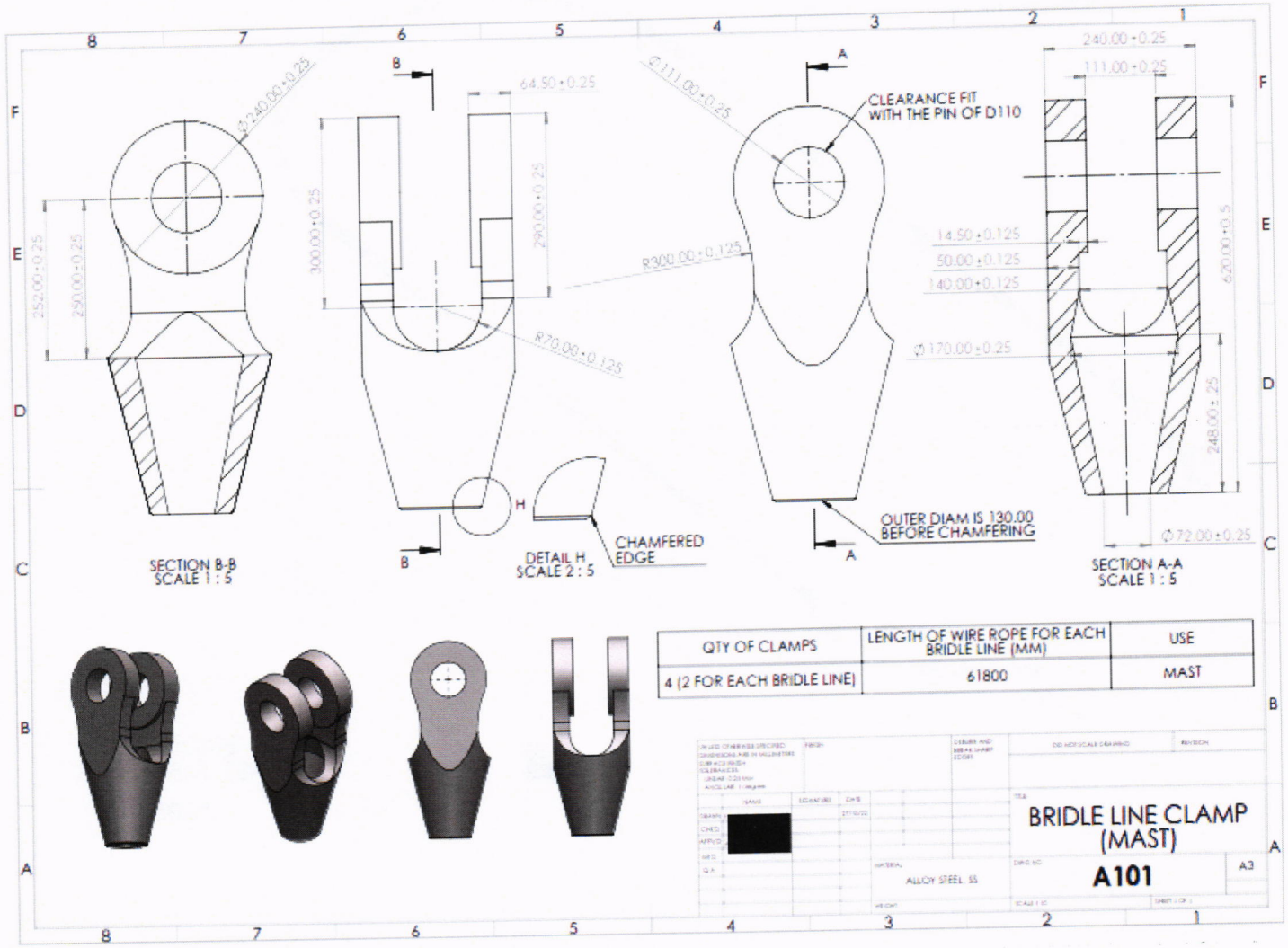


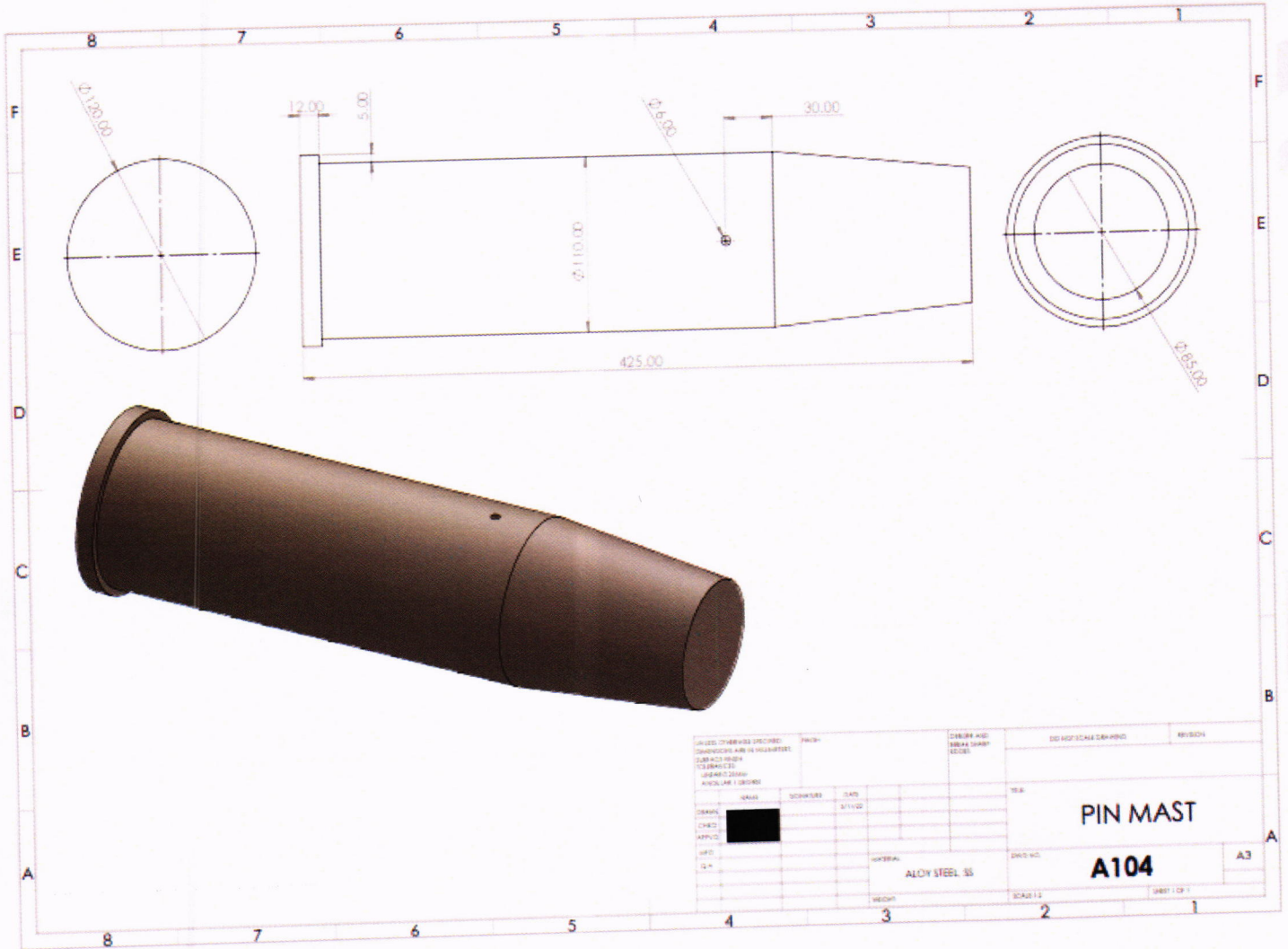
mtd

Dun



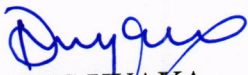
Dee



NB: All other instructions remain unchanged.

Yours faithfully,



DORIS KYAKA
MANAGER, SUPPLY CHAIN
FOR: GEOTHERMAL DEVELOPMENT COMPANY